

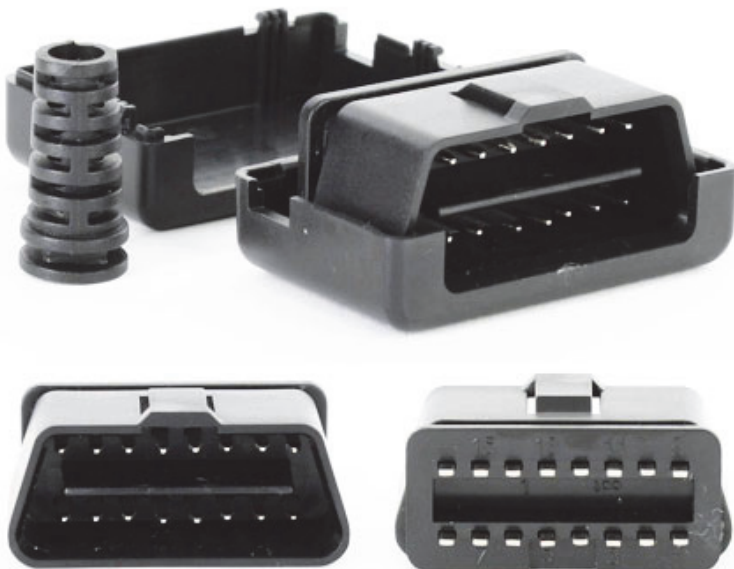
Tutorial: Globalsat Tracker Installation

Used components/parts:

- SIM card (eg. AldiTalk-card with data flatrate 3.99 EUR p. month)
- GTR 129 tracker (also applies to model TR-600)
- We used a Peugeot 206 car, but any vehicle with 12/24V can be used
- Installation tools

Integration in the vehicle:

1. If you have the possibility to get +12V ~ 36V DC from your car's OBD-connector then you also can use the adapter below for the integration.
(<http://www.cartft.com/catalog/il/1675>)



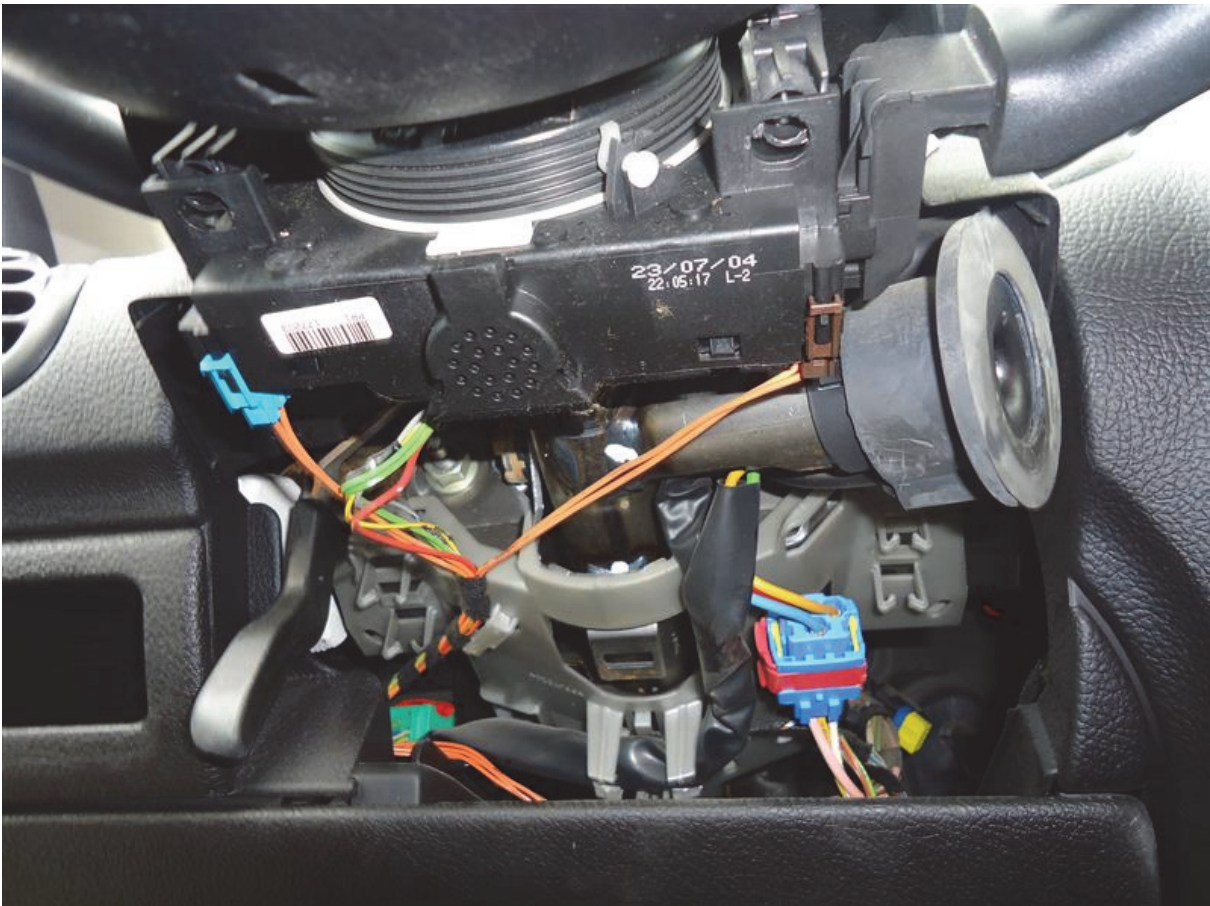


CARTFT.COM

Shop for mobile
PC- and GPS-Solutions

Power Up Your Car

1.1 Remove plastic cover from below the steering wheel:





2. For avoiding shortage or misfunction, remove connector from ignition lock:



In our car we have: Blue = Minus/GND, Red = Plus and Yellow = Ignition plus.



CARTFT.COM
Shop for mobile
PC- and GPS-Solutions

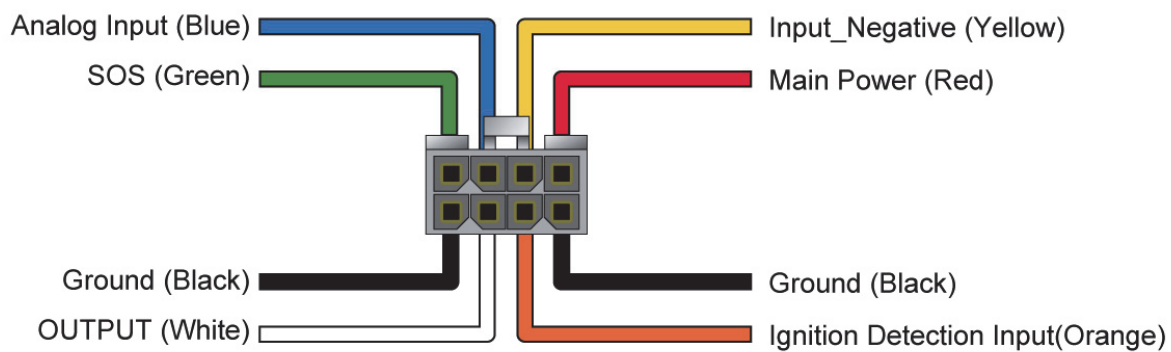
Power Up Your Car

3. Put the tracker at the desired spot. In our tutorial we directly put it on the dashboard.





4. Connect the tracker with ignition lock connector. We recommend using fast cable connectors.



Pinout:

Plus 12-36V DC
Minus/GND
Ignition Plus

→ Red / Tracker
→ Black (PIN under the red cable on connector) / Tracker
→ Orange / Tracker

5. Put in your sim card into the tracker and set the switch to „ON“.



6. For fixing the tracker you can use tape, cable fastener or the integrated magnet on the rear side.



Installation of the tracker is finished now. Please continue on <http://ezfinder.com.tw>
(Please find further instructions/notes in our separate software tutorial)